

CMA 3000

SPECIFICATIONS

Ethernet interface measurement options



General description

When equipped with the Ethernet interface measurement option, the battery-powered, easy-to-use and portable Anritsu CMA 3000 is a comprehensive solution for testing and measuring LAN communication lines, in addition to the full-featured 2 Mbps transmission testing provided by the CMA 3000 basic instrument. Adding additional CMA 3000 options also allows you to test V-series data interface connections and SDH lines.

It's easy to configure the CMA 3000 Ethernet options to your requirements. A dual port module is available for testing Ethernet 10/100 interfaces. Or, you can have a dual-port Ethernet 10/100/1000 test module equipped with electrical and optional optical interface ports.

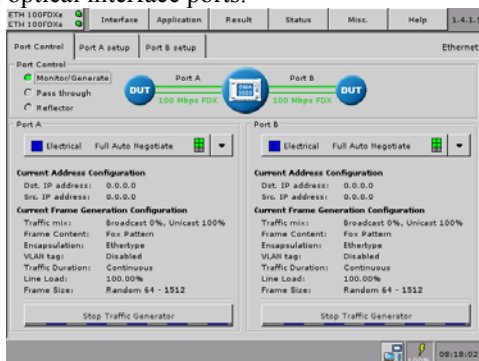


Fig. 1 The operation of the CMA 3000 is made easy through an intuitive graphical user interface.

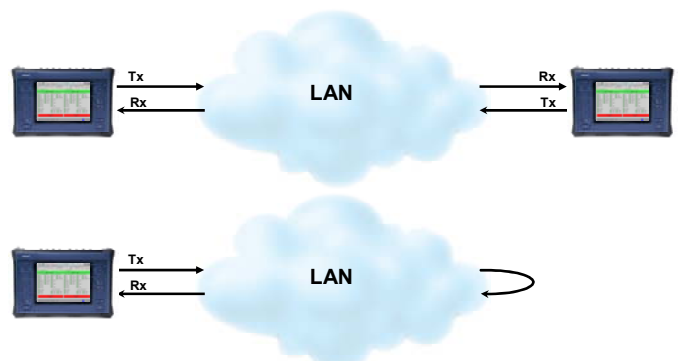


Fig. 2 Out-of-service testing with two instruments or a far-end loop back.

Key Features	Key Applications
<ul style="list-style-type: none"> Traffic generation capabilities up to full line rate Automated RFC 2544 testing of: <ul style="list-style-type: none"> Throughput Frame loss Latency Packet jitter Burstability Simultaneous monitoring of both directions on a line IPv4 and IPv6 support Multistream, Stacked VLAN, MPLS and VoIP test options 	<ul style="list-style-type: none"> Installation and commissioning testing QoS verification End-to-end testing Rapid in-service diagnostics and troubleshooting

Transmitters and receivers permit out-of-service testing for installation, commissioning and Quality of Service (QoS) verification while a pass-through mode enables in-service monitoring for both fast troubleshooting and detailed analysis of the live traffic on the line. This makes CMA 3000 the ideal instrument for measuring in- and out-of-service transmission quality.

You can easily read and interpret information from the tested lines off the large color display with easy-to-understand colors and graphical symbols. For fast troubleshooting, the CMA 3000 displays alarms and transmission link status on LED indicators. And the graphical user interface makes it a simple task to configure and operate the instrument.

Installation, commissioning and QoS verification

For installation, commissioning and QoS verification CMA 3000 provides powerful and flexible traffic generation capabilities, allowing you to easily test the network under various conditions, including generation of VLAN tagged traffic. Performance and QoS statistics are presented in tables and graphs facilitating results interpretation. Through preprogrammed thresholds, CMA 3000 can isolate abnormal conditions on the tested line.

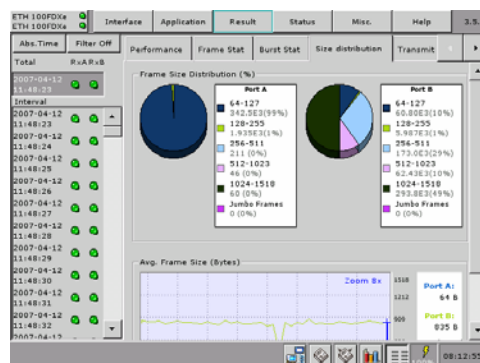


Fig. 3 Statistics are presented in tables and easy to understand graphs.

RFC 2544 analysis

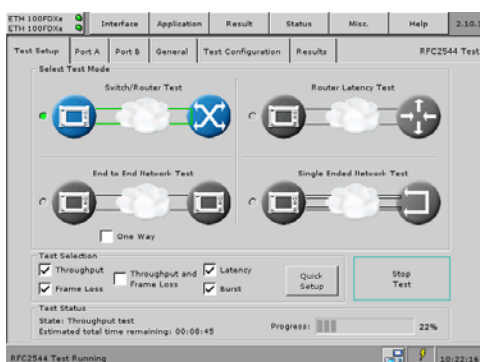


Fig. 4 Intuitive configuration of the RFC 2544 tests

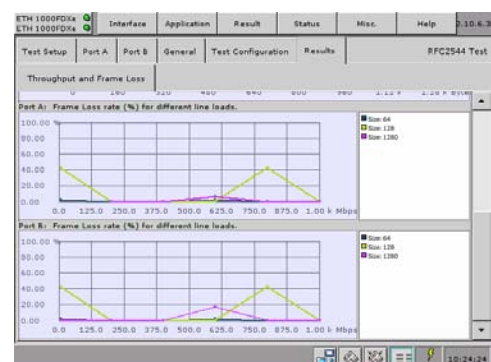


Fig. 5 CMA 3000 presents RFC 2544 results in graphs or tabular format

The IETF RFC 2544 “Benchmarking Methodology for Network Interconnect Devices” defines a number of tests to be used for describing the performance characteristics of these network devices. With the CMA 3000 Ethernet options, testing of performance parameters, such as throughput and frame loss, latency, packet jitter and burstability in compliance with RFC 2544 is straightforward. CMA 3000 automates the testing procedure while still allowing you to configure the test to be as thorough as needed. To get full information on the performance of both sides of a line, the end-to-end test mode allows two CMA 3000 to work together in a master-slave setup whereby the user can control both units and inspect the results of the test from both units on the master instrument.

In-service troubleshooting

For fast troubleshooting the CMA 3000 status monitor is always active, providing essential information on the monitored transmission system, including:

- Line alarms on LED indicators with a trap facility
- Display of current line status
- Electrical cable test facility
- Indication of main link quality parameters : Utilization, Throughput and Errored frames

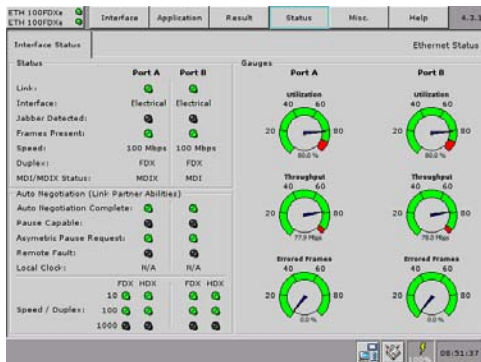


Fig. 6 Interface status indicators for a quick overview of the line's condition.

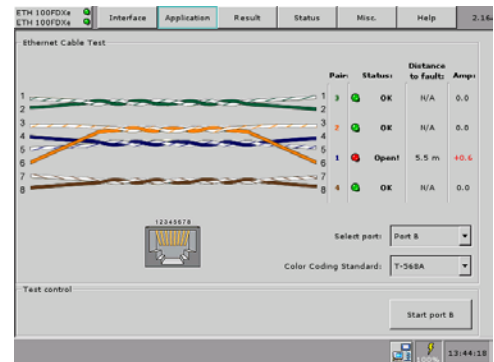


Fig. 7 The CMA 3000s cable test facility makes it easy to identify failures on electrical cables like short circuits or breaks of a wire pair. The cable test facility also indicates the distance from the instrument to the fault.

Detailed in-service analysis

CMA 3000 can analyze live traffic in details by presenting statistics on the main performance indicators for a monitored line. To facilitate the analysis of data it's possible to define threshold values for a number of parameters. CMA 3000 uses the thresholds to color-highlight results outside the acceptable range. This is also indicated on the LEDs of the instrument.

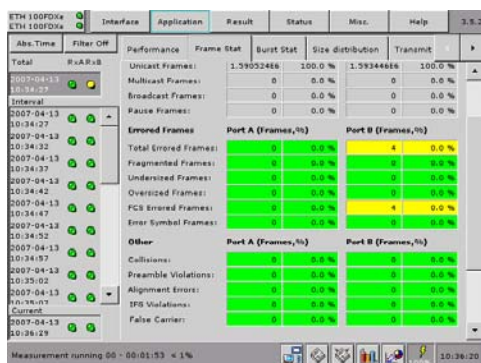


Fig. 8 Tabular presentation of performance statistics.

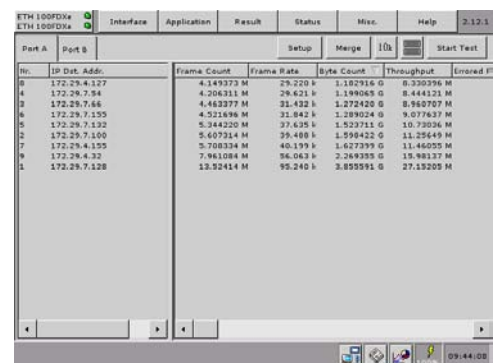


Fig. 9 IP traffic analysis with the IP channel statistics option..

IP channel statistics option

For further analysis of live IP traffic on the Ethernet line CMA 3000 can be equipped with the IP channel statistics option. This option provides detailed information on the traffic on the monitored line for up to 232 individual channels, identified by parameters like Ethernet addresses, IP addresses, VLAN tags or MPLS labels. This allows you to identify whether a channel:

- Loads the line heavily
- Sends many errored frames
- Uses the line in an inefficient way

Ethernet Multistream option

The Ethernet multistream option for the CMA 3000 allows the user to test a congested networks ability to transport high priority traffic rather than lower priority traffic. The user can activate up to 8 streams with different priority settings on the Ethernet line and detect how they are affected by frame loss through the network.

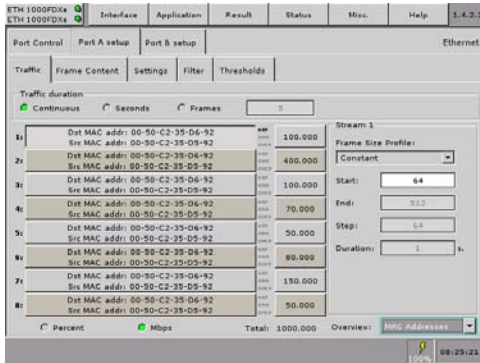


Fig. 10 The CMA 3000 gives an easy overview of the up to 8 streams that it can generate.

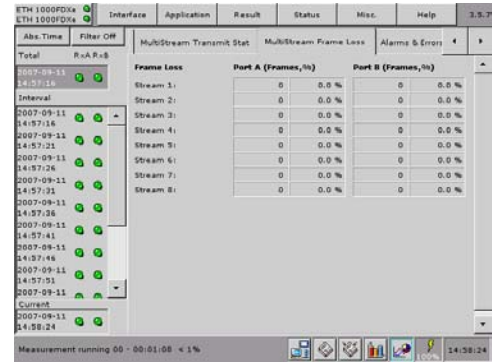


Fig. 11 Information on frame loss in shown for up to 8 streams in one screen to make it easy to compare how the streams are transported through the network.

Stacked VLAN Option

Stacked VLAN (Q-in-Q) is increasingly used in several types of Ethernet based networks. With a CMA 3000 equipped with Ethernet and Stacked VLAN options the user has a powerful tool for testing such networks. The Stacked VLAN option supports up to 8 levels of VLAN tags.

MPLS Option

MPLS (Multi Protocol Label Switching) allows efficient routing of traffic in packet based networks. With a CMA 3000 equipped with Ethernet and the MPLS option the user has a powerful tool for testing this type of traffic. Up to 8 levels of MPLS labels can be inserted. The MPLS option also supports EoMPLS (Ethernet over MPLS) also known as PWE3 (Pseudo Wire Emulation Edge-to-Edge), which defines transport of layer 2 protocol across an MPLS network.

VoIP test options

With a CMA 3000 equipped with VoIP and Ethernet options the field technician can use the same instrument for testing VoIP services and the basic Ethernet transport system.

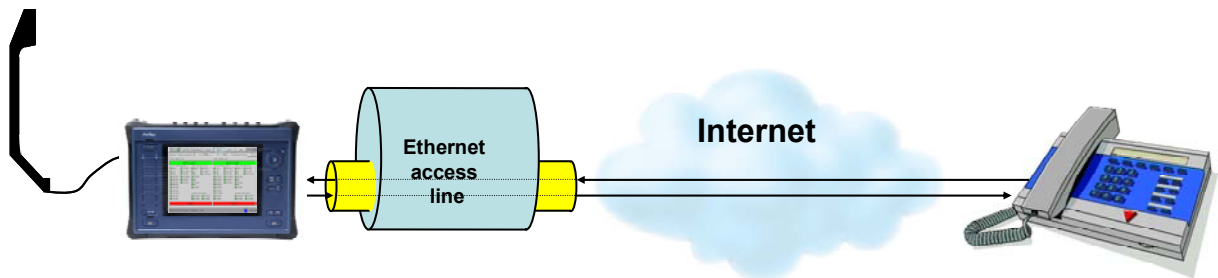


Fig. 12 Basic VoIP connectivity is verified by calling another party using the CMA 3000's VoIP functionality.

For VoIP testing the instrument can establish a call and answer incoming calls. By connecting an analog telephone to the CMA 3000 the user can make a conversation with the called/calling party. Statistics collected during the call will inform the user on the performance of the communication line used for the call. Based on this an add-on option can present voice quality information in terms of Mean Opinion Score (MOS) and R-factor values for one call at the time.

To make a realistic test case the instrument can generate or receive up to 8 calls simultaneously. These calls can be made on one or both test ports in the Ethernet option. If the instrument is also equipped with the Ethernet Multistream option, each of the 8 calls can be assigned to a stream, f.inst. allowing individual configuration of priority for the calls.

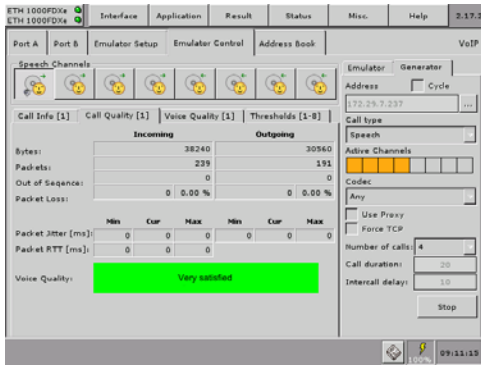


Fig. 13 A total of 8 VoIP calls can be generated through the CMA 3000's two Ethernet test ports. The voice quality evaluation is presented for one call if the Voice Quality Measurement option is installed.

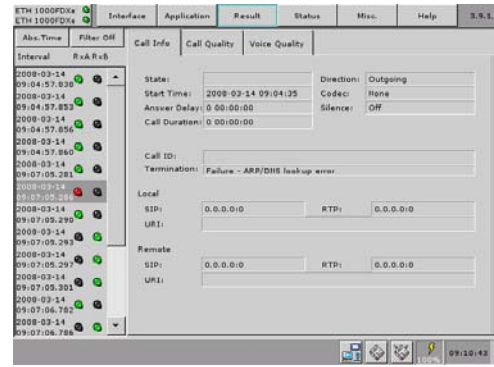


Fig. 14 VoIP call records are stored in memory when a measurement is active. Unsuccessful calls are highlighted with a red indicator in the left column.

Specifications

The specifications below list the functionality for a basic CMA 3000 with installed Ethernet interface measurement option. For information on the functionality of the basic configuration please refer to the CMA 3000 basic instrument specifications sheet.

Ethernet test interfaces																																		
Hardware option built into basic instrument	<ul style="list-style-type: none"> Electrical line interfaces 2 ports 10/100Mbps RJ45 (unshielded and shielded twisted pair cables, category 5, 5E, and 6) FDX and HDX operation 																																	
Hardware option attached to basic instrument	<ul style="list-style-type: none"> Optical line interfaces 2 ports 1000 Mbps, user-selectable 850 nm (SX), 1310 nm (LX) and 1550 nm (ZX) or 100 Mbps 1310 nm (FX or LX) <i>NB: Correct functioning can only be guaranteed with optical modules purchased from Anritsu for the CMA 3000.</i> Electrical line interfaces 2 ports (in addition to the optical ports) 10/100/1000 Mbps RJ45 (unshielded and shielded twisted pair cables, category 5, 5E, and 6) Specification of optical modules purchased from Anritsu for the CMA 3000 (each with 1 transmitter and 1 receiver) with LC connectors (specifications may be subject to change without further notice): <table border="1"> <thead> <tr> <th>Description</th> <th>Min. input sensitivity and wavelength</th> <th colspan="3">Output power and wavelength</th> </tr> </thead> <tbody> <tr> <td>1000BASE-SX 850 nm Multi mode</td> <td>- 17 dBm Min. 770 nm Max. 860 nm</td> <td>Between - 9,5 dBm and - 3 dBm</td> <td colspan="2">Between 830 nm and 860 nm</td> </tr> <tr> <td>1000BASE-LX 1310 nm Single mode</td> <td>- 20 dBm Min. 1260 nm Max. 1580 nm</td> <td>Between - 9 dBm and - 3 dBm</td> <td colspan="2">Between 1285 nm and 1343 nm</td> </tr> <tr> <td>1000BASE-ZX 1550 nm Single mode</td> <td>- 24 dBm Min. 1260 nm Max. 1580 nm</td> <td>Between 0 dBm and 5 dBm</td> <td colspan="2">Between 1500 nm and 1580 nm</td> </tr> <tr> <td>100BASE-FX 1310 nm Multi mode</td> <td>- 31 dBm Min. 1260 nm Max. 1570 nm</td> <td>Between - 20 dBm and - 14 dBm</td> <td colspan="2">Between 1270 nm and 1335 nm</td> </tr> <tr> <td>100BASE-LX 1310 nm Single mode</td> <td>- 28 dBm Min. 1260 nm Max. 1570 nm</td> <td>Between - 15 dBm and - 8 dBm</td> <td colspan="2">Between 1270 nm and 1335 nm</td> </tr> </tbody> </table> <p>Note: 100BASE modules are Gigabit Ethernet port converter modules to 100BASE optical</p>				Description	Min. input sensitivity and wavelength	Output power and wavelength			1000BASE-SX 850 nm Multi mode	- 17 dBm Min. 770 nm Max. 860 nm	Between - 9,5 dBm and - 3 dBm	Between 830 nm and 860 nm		1000BASE-LX 1310 nm Single mode	- 20 dBm Min. 1260 nm Max. 1580 nm	Between - 9 dBm and - 3 dBm	Between 1285 nm and 1343 nm		1000BASE-ZX 1550 nm Single mode	- 24 dBm Min. 1260 nm Max. 1580 nm	Between 0 dBm and 5 dBm	Between 1500 nm and 1580 nm		100BASE-FX 1310 nm Multi mode	- 31 dBm Min. 1260 nm Max. 1570 nm	Between - 20 dBm and - 14 dBm	Between 1270 nm and 1335 nm		100BASE-LX 1310 nm Single mode	- 28 dBm Min. 1260 nm Max. 1570 nm	Between - 15 dBm and - 8 dBm	Between 1270 nm and 1335 nm	
Description	Min. input sensitivity and wavelength	Output power and wavelength																																
1000BASE-SX 850 nm Multi mode	- 17 dBm Min. 770 nm Max. 860 nm	Between - 9,5 dBm and - 3 dBm	Between 830 nm and 860 nm																															
1000BASE-LX 1310 nm Single mode	- 20 dBm Min. 1260 nm Max. 1580 nm	Between - 9 dBm and - 3 dBm	Between 1285 nm and 1343 nm																															
1000BASE-ZX 1550 nm Single mode	- 24 dBm Min. 1260 nm Max. 1580 nm	Between 0 dBm and 5 dBm	Between 1500 nm and 1580 nm																															
100BASE-FX 1310 nm Multi mode	- 31 dBm Min. 1260 nm Max. 1570 nm	Between - 20 dBm and - 14 dBm	Between 1270 nm and 1335 nm																															
100BASE-LX 1310 nm Single mode	- 28 dBm Min. 1260 nm Max. 1570 nm	Between - 15 dBm and - 8 dBm	Between 1270 nm and 1335 nm																															
Test configurations	<ul style="list-style-type: none"> Monitor/generate Pass-through Reflector 																																	

Ethernet measurements	
Supported encapsulations (frame formats)	<ul style="list-style-type: none"> EtherType II (DIX v.2) IEEE 802.3 with 802.2 (LLC1) IEEE 802.3 with SNAP

Traffic generation	<ul style="list-style-type: none"> • Variable line rate traffic generation, up to full line rate • Configurable IP and Ethernet source and destination addresses (supports IPv4 and IPv6 addressing). Fixed, DHCP, DNS. • User-defined traffic mix of unicast and broadcast frames • Adjustable frame size from 38 bytes to 10,000 bytes • User-defined VLAN ID and VLAN priority • Frame sizes may be set to constant, stepped or random length • Generate pause frames • Respond to pause frames • Answer incoming ARP and ping requests (On/Off) • User programmable DSCP/TOS byte • User programmable UDP/TCP address • Optional Ethernet (MAC) address swapping (reflector mode)
Receiver settings	<ul style="list-style-type: none"> • User-defined expected preamble length (3 to 15 bytes) • User-defined IFG lower threshold (8 to 15 bytes) • User-defined Jumbo frame size upper limit (1519 to 10000 bytes)
Error generation	<ul style="list-style-type: none"> • IFG, FCS, Preamble, Error symbol • Alignment (Ethernet 10/100 only) • Wrong IP checksum, fragmented IP, UDP with zero checksum • PRBS bit error, BERT sequence error
Alarm generation	<ul style="list-style-type: none"> • No link • Remote fault
Cable test	<p>Identifies failures on electrical cables like short circuits or breaks of a wire pair and indicates the distance from the instrument to the fault.</p> <ul style="list-style-type: none"> • Max distance: 110 m • Accuracy: +/- 1 m <p>On the Ethernet 10/100 Mbps option port A pair 1 (which is not used for the Ethernet data) is reserved for internal applications and is not tested.</p>
Traceroute	<p>Trace the IP route over the IP network</p> <ul style="list-style-type: none"> • User-defined max no. of hops (1 to 255) • Information per hop: Min/avg/max ping time and no. of ping time outs
Ping test	<p>For connectivity and configuration check</p> <ul style="list-style-type: none"> • Round Trip Time (RTT) • Supports IPv4 and IPv6 addressing • Answer incoming Ping requests (On/Off)
RFC 2544 installation and commissioning	<p>Switch/router test and Single ended network test modes:</p> <ul style="list-style-type: none"> • Throughput • Frame loss • Latency or packet jitter • Back-to-back frames (burstability) <p>End to end network test mode (two CMA 3000s in a master-slave setup)</p> <ul style="list-style-type: none"> • Throughput • Frame loss • Back-to-back frames (burstability) <p>Router latency test mode: IP ping based latency test or packet jitter</p> <p>For RFC 2544 throughput measurement the user can choose to make the measurement for:</p> <ul style="list-style-type: none"> • Physical layer • Physical layer excl. preamble • Link layer • Network layer • Data layer • Average or maximum values

BER test	<p>Generation and detection of test patterns. Count of errors in received test pattern. Pattern generation: Unframed, framed with IP header or framed with IP header and TCP/UDP header Detection of sequence errors and loss of sequence synchronization. Frame loss count and frame loss seconds Throughput measurement results are calculated for:</p> <ul style="list-style-type: none"> • Physical layer • Physical layer excl. preamble • Link layer • Network layer • Data layer • Min, avg. and max. values are presented <p>Test patterns supported:</p> <ul style="list-style-type: none"> • PRBS 9, PRBS 11, PRBS 15, PRBS 20, PRBS 23, PRBS 29, PRBS 31, HF test pattern, CRPAT, JTPAT, SPAT
-----------------	--

Results	
Status	<ul style="list-style-type: none"> • Link status • Remote fault • Signal present • Jabber detected • Frames present • Speed • Full or half duplex • Interface type • Local clock (Ethernet 1000) • Pause capable and Asymmetric pause request • Link partner capabilities • Indicators for Utilization, throughput and errored frames <p>CMA 3000 indicates the level for optical Ethernet 1000 Mbps interfaces</p>
Filters	<p>Up to 8 filter conditions can be defined. Each condition can filter on:</p> <ul style="list-style-type: none"> • IP or MAC source address • IP or MAC destination address • Broadcast address • IEEE OUI value • Encapsulation type • VLAN ID and VLAN tag priority • MPLS • TPC/UDP source and destination port • User-defined pattern at a defined offset
Adjustable thresholds	<ul style="list-style-type: none"> • Utilization • Throughput • Collision rate • Unicast frames • Multicast frames • Broadcast frames • Pause frames • Errored frames • Undersized frames (runts) • Oversized frames • FCS errored frames • IFG violations • Preamble violations • Alignment errors

Performance statistics	<ul style="list-style-type: none"> • Max/min/avg utilization • Max/min/avg throughput • Max/min/avg frame rate
Frame statistics	<ul style="list-style-type: none"> • Total frames • Total valid frames • Unicast/multicast/broadcast frames • Number of pause frames • Total errored frames • Fragmented frames • Number of oversized and undersized (runts) frames • Number of FCS errored frames • Error symbol frames • Number of collisions (10/100 Mbps half duplex) • Preamble violations • Alignment errors • IFG violations • False carrier
Frame distribution statistics	<ul style="list-style-type: none"> • Total valid/good frames • 64 - 127 byte frames • 128 - 255 byte frames • 256 - 511 byte frames • 512 - 1023 byte frames • 1024 - 1518 byte frames • Total number of jumbo frames • Max/min/avg frame size
Burst statistics	<ul style="list-style-type: none"> • Total frames in bursts • Max/min/avg burst size
DHCP	<ul style="list-style-type: none"> • Show source IP address assigned by DHCP • Show current lease expire time • Show IP addresses of primary and secondary DNS server when obtained by DHCP

Ethernet Multistream option (requires that an Ethernet option is installed in the CMA 3000)	
Number of streams	Up to 8 streams can be activated on the Ethernet line
Parameters per stream	<ul style="list-style-type: none"> • Encapsulation (frame format) • Line rate traffic load, up to full line rate • Configurable IP and Ethernet source and destination addresses (supports IPv4 and IPv6 addressing) • User-defined traffic mix of unicast and broadcast frames • Adjustable frame size from 38 bytes to 10,000 bytes • Frame sizes may be set to constant, stepped or random length • User-defined VLAN ID and VLAN priority • User programmable DSCP/TOS byte • User programmable UDP/TCP address <p>In stream 1 a BER test can be made</p>
Statistics	<p>Available information per stream:</p> <ul style="list-style-type: none"> • Frame loss count/rate • Frames and bytes received • Frames and bytes transmitted

Ethernet Stacked VLAN option (requires that an Ethernet option is installed in the CMA 3000)	
Number of VLAN tags	Up to 8 VLAN tags can be set by the user Only 1 level of VLAN is supported in ping, traceroute and RFC2544 router latency tests
Parameters per VLAN tag	<ul style="list-style-type: none"> EtherType 0x8100 (802.1Q), 0x88a8 (802.1ad), 0x9100 or 0x9200 User-defined VLAN ID, CFI and VLAN priority
Status	Indicator for detection of VLAN tagged frames (not during IP Channel Statistics test)
Statistics	Available information: <ul style="list-style-type: none"> Number of VLAN tagged frames Max. number of VLAN layers detected

Ethernet MPLS option (requires that an Ethernet option is installed in the CMA 3000)	
MPLS supported	MPLS unicast is supported (EtherType 0x8847) Support for MPLS in BERT, RFC 2544 (excluding router latency) Tests and general statistics MPLS can only transport VLAN and VoIP if EoMPLS is activated
Number of MPLS headers	Up to 8 MPLS headers can be set by the user
Parameters per MPLS headers	User-defined label, Exp and TTL fields in the MPLS header
EoMPLS support	An EoMPLS (Ethernet over MPLS) or PWE3 (Pseudo Wire Emulation Edge-to-Edge) label (the RFC4448 Control word) can be added.
Status	Indicator for detection of MPLS frames and EoMPLS (not during IP Channel Statistics test)
Statistics	Available information: <ul style="list-style-type: none"> Number of MPLS frames and EoMPLS frames Max. number of MPLS layers detected

IP channel statistics option (requires that an Ethernet option is installed in the CMA 3000)	
Statistics	<p>The statistics are provided for up to 232 channels, identified by user-defined combinations of:</p> <ul style="list-style-type: none"> IPv4, IPv6 or MAC address VLAN ID or MPLS label Protocol information IP next header (protocol) TPC/UDP ports <p>Available information per channel:</p> <ul style="list-style-type: none"> Frame count/rate Throughput Byte count MPLS frames Jumbo frames Errored frames and errored frame rate Errored throughput Errored byte count Frame/packet size distribution IP header bytes IP fragments TTL threshold violations IP packet count, rate IP bytes IP throughput IP header errors TCP/UDP bytes TCP/UDP packet count, rate, throughput TCP/UDP errored packets

VoIP Call emulation options (requires that an Ethernet option is installed in the CMA 3000)	
Interfaces	<p>The VoIP options for the CMA 3000 work with the Ethernet test interface options for the instrument:</p> <ul style="list-style-type: none"> • The 10/100/1000 Mbps Ethernet option with electrical interfaces and optional 100/1000 Mbps optical interfaces • The 10/100 Mbps Ethernet option with electrical interfaces
Emulation modes	The instrument supports Client/Terminal emulation.
Supported protocols (options)	<ul style="list-style-type: none"> • SIP RFC 3261 • RTP/RTCP RFC 3550 and RFC 3551 • ITU-T H.323 Full connect • ITU-T H.323 Fast connect <p>The VoIP call emulation options run on IP v4 only.</p>
Settings	<p>The following settings are user selectable:</p> <ul style="list-style-type: none"> • Calling alias • IP address DHCP/static and Subnet mask • Gateway address and DNS server • DSCP/TOS byte • MAC address • VLAN ID and VLAN priority • RTCP on/off <p>SIP specific parameters (requires SIP call emulator):</p> <ul style="list-style-type: none"> • Proxy/registrar address and port, User name, password, Registrar expire time <p>H.323 specific parameters (requires H.323 call emulator):</p> <ul style="list-style-type: none"> • Gate Keeper Mode (No Gate Keeper, Auto Discover Gate Keeper, Static Gate Keeper) • Gate Keeper address and port, User name, password, H.245 tunneling
Supported Voice Coding	<p>The following Voice codings are supported:</p> <ul style="list-style-type: none"> • μ-law/A-law (G.711) • ACELP 5.3, MPC-MLQ 6.3 kbps (G.723.1) • ADPCM 16/24/32/40 kbps (G.726) (only with SIP call emulator) • LD-CELP 16 kbps (G.728) • CS-ACELP 8 kbps (G.729 a,b) • GSM FR • Fixed codec preference list <p>User selectable</p> <ul style="list-style-type: none"> • Silence suppression (depends on selected codec) • Jitter buffer delay • Source: Voice conversation (optional telephone), tone, pre-recorded speech signal
Simultaneous calls	Up to 8 calls can manually be generated at a time
Call generator	Up to 8 simultaneous calls can automatically be generated repeatedly.
Call emulation logs	<p>The following information is provided for each call:</p> <ul style="list-style-type: none"> • IP address/Alias • RTP ports • Answer delay • Duration of call • Encoding (codec) • Silence suppression On/Off • Call progress and error messages
Call statistics	<ul style="list-style-type: none"> • Throughput sent/Throughput received as Bytes and Packets • Out of sequence packets. • Packet jitter (min/avg/max) • Packet Round Trip Time (RTT) • Packet loss

DTMF detection	Received in-band DTMF (tone signal in the audio stream) can be recorded for one speech channel. DTMF detection can be enabled and disabled.
Voice quality (optional)	<p>Voice quality measurement on one call at the time:</p> <ul style="list-style-type: none"> • Uses Telchemy's algorithms for achievement of MOS and R-factor values at live traffic end points: • MOS: <ul style="list-style-type: none"> ○ Conversational ○ Listening ○ P.862 estimate ○ Maximum with selected codec • R-factor <ul style="list-style-type: none"> ○ Conversational ○ Listening ○ G.107 estimate ○ Listening during Burst and Gap periods ○ Maximum with selected codec • Voice quality evaluation summary, based on user defined thresholds
Phone Interface	<p>RJ-11 with a 6 slot 4 connector configuration for connection of an analog telephone</p> <p>AC impedance: Approx. 600Ω.</p> <p>The phone will be supplied with a constant current of approx. 20 mA</p> <p>The phone supports receiving and transmitting speech signals.</p>

Miscellaneous	
Mechanical	<p>The electrical 10/100Mbps option is installed inside the basic instrument.</p> <p>The Gigabit Ethernet option module, plugged onto the back of the instrument.</p> <ul style="list-style-type: none"> • Dimensions of Gigabit module: Approx. 10 x 30.7 x 3.5 cm (HxWxD) • Weight of Gigabit module: Approx. 1.0 kg

Anritsu Corporation

5-1-1 Onna, Atsugi-shi, Kanagawa, 243-8555 Japan
Phone: +81-46-223-1111
Fax: +81-46-296-1264

• U.S.A.**Anritsu Company**

1155 East Collins Blvd., Suite 100, Richardson,
TX 75081, U.S.A.
Toll Free: 1-800-267-4878
Phone: +1-972-644-1777
Fax: +1-972-671-1877

• Canada**Anritsu Electronics Ltd.**

700 Silver Seven Road, Suite 120, Kanata,
Ontario K2V 1C3, Canada
Phone: +1-613-591-2003
Fax: +1-613-591-1006

• Brazil**Anritsu Eletrônica Ltda.**

Praca Amadeu Amaral, 27 - 1 Andar
01327-010-Paraiso-São Paulo-Brazil
Phone: +55-11-3283-2511
Fax: +55-11-3288-6940

• Mexico**Anritsu Company, S.A. de C.V.**

Av. Ejército Nacional No. 579 Piso 9, Col. Granada
11520 México, D.F., México
Phone: +52-55-1101-2370
Fax: +52-55-5254-3147

• U.K.**Anritsu EMEA Ltd.**

200 Capability Green, Luton, Bedfordshire, LU1 3LU, U.K.
Phone: +44-1582-433200
Fax: +44-1582-731303

• France**Anritsu S.A.**

16/18 avenue du Québec-SILIC 720
91961 COURTABOEUF CEDEX, France
Phone: +33-1-60-92-15-50
Fax: +33-1-64-46-10-65

• Germany**Anritsu GmbH**

Nemetschek Haus, Konrad-Zuse-Platz 1
81829 München, Germany
Phone: +49-89-442308-0
Fax: +49-89-442308-55

• Italy**Anritsu S.p.A.**

Via Elio Vittorini 129, 00144 Roma, Italy
Phone: +39-6-509-9711
Fax: +39-6-502-2425

• Sweden**Anritsu AB**

Borgafjordsgatan 13, 164 40 KISTA, Sweden
Phone: +46-8-534-707-00
Fax: +46-8-534-707-30

• Finland**Anritsu AB**

Teknobulevardi 3-5, FI-01530 VANTAA, Finland
Phone: +358-20-741-8100
Fax: +358-20-741-8111

• Denmark**Anritsu A/S**

Kirkebjerg Allé 90, DK-2605 Brøndby, Denmark
Phone: +45-72112200
Fax: +45-72112210

• Spain**Anritsu EMEA Ltd.****Oficina de Representación en España**

Edificio Veganova
Avda de la Vega, n° 1 (edf 8, pl 1, of 8)
28108 ALCOBENDAS - Madrid, Spain
Phone: +34-914905761
Fax: +34-914905762

• Russia**Anritsu EMEA Ltd.****Representation Office in Russia**

Tverskaya str. 16/2, bld. 1, 7th floor.
Russia, 125009, Moscow
Phone: +7-495-363-1694
Fax: +7-495-935-8962

• United Arab Emirates**Anritsu EMEA Ltd.****Dubai Liaison Office**

P O Box 500413 - Dubai Internet City
Al Thuraya Building, Tower 1, Suit 701, 7th Floor
Dubai, United Arab Emirates
Phone: +971-4-3670352
Fax: +971-4-3688460

• Singapore**Anritsu Pte. Ltd.**

60 Alexandra Terrace, #02-08, The Comtech (Lobby A)
Singapore 118502
Phone: +65-6282-2400
Fax: +65-6282-2533

• India**Anritsu Pte. Ltd.****India Branch Office**

3rd Floor, Shri Lakshminarayan Niwas, #2726,
HAL 3rd Stage, Bangalore - 560 038, India
Phone: +91-80-4058-1300
Fax: +91-80-4058-1301

• P.R. China (Hong Kong)**Anritsu Company Ltd.**

Units 4 & 5, 28th Floor, Greenfield Tower, Concordia Plaza,
No. 1 Science Museum Road, Tsim Sha Tsui East,
Kowloon, Hong Kong
Phone: +852-2301-4980
Fax: +852-2301-3545

• P.R. China (Beijing)**Anritsu Company Ltd.****Beijing Representative Office**

Room 2008, Beijing Fortune Building,
No. 5, Dong-San-Huan Bei Road,
Chao-Yang District, Beijing 100004, P.R. China
Phone: +86-10-6590-9230
Fax: +86-10-6590-9235

• Korea**Anritsu Corporation, Ltd.**

8F Hyunjuk Building, 832-41, Yeoksam Dong,
Kangnam-ku, Seoul, 135-080, Korea
Phone: +82-2-553-6603
Fax: +82-2-553-6604

• Australia**Anritsu Pty. Ltd.**

Unit 21/270 Ferntree Gully Road, Notting Hill,
Victoria 3168, Australia
Phone: +61-3-9558-8177
Fax: +61-3-9558-8255

• Taiwan**Anritsu Company Inc.**

7F, No. 316, Sec. 1, Neihu Rd., Taipei 114, Taiwan
Phone: +886-2-8751-1816
Fax: +886-2-8751-1817